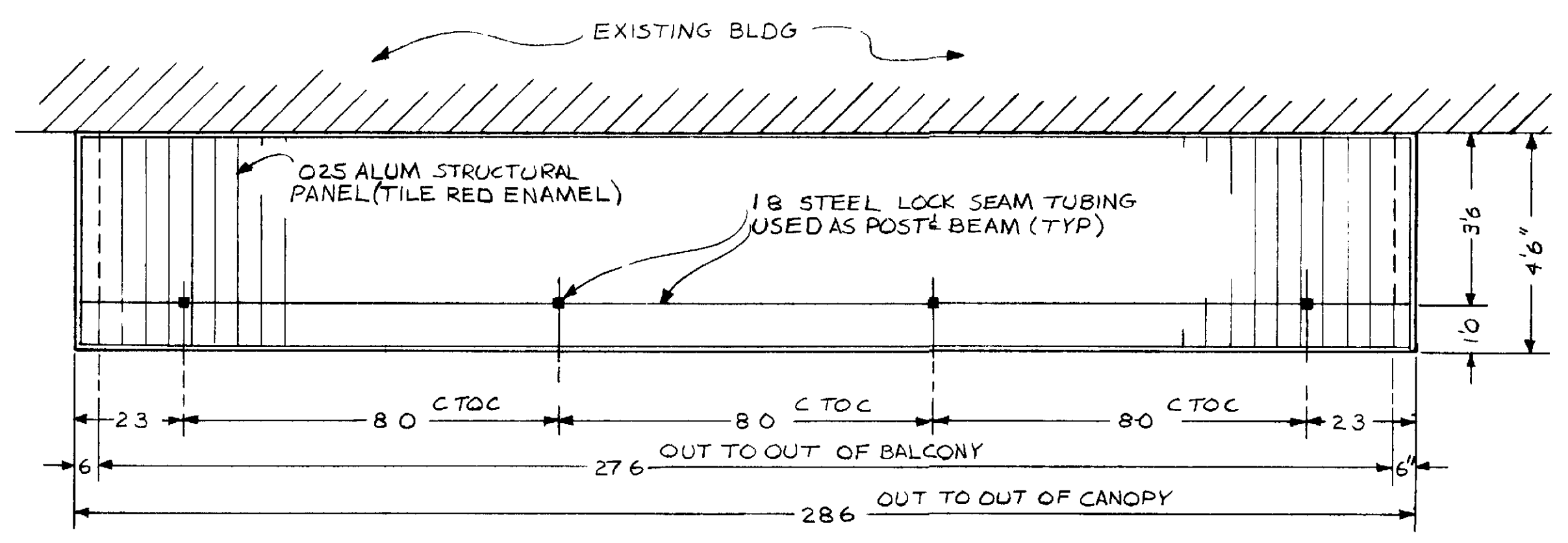
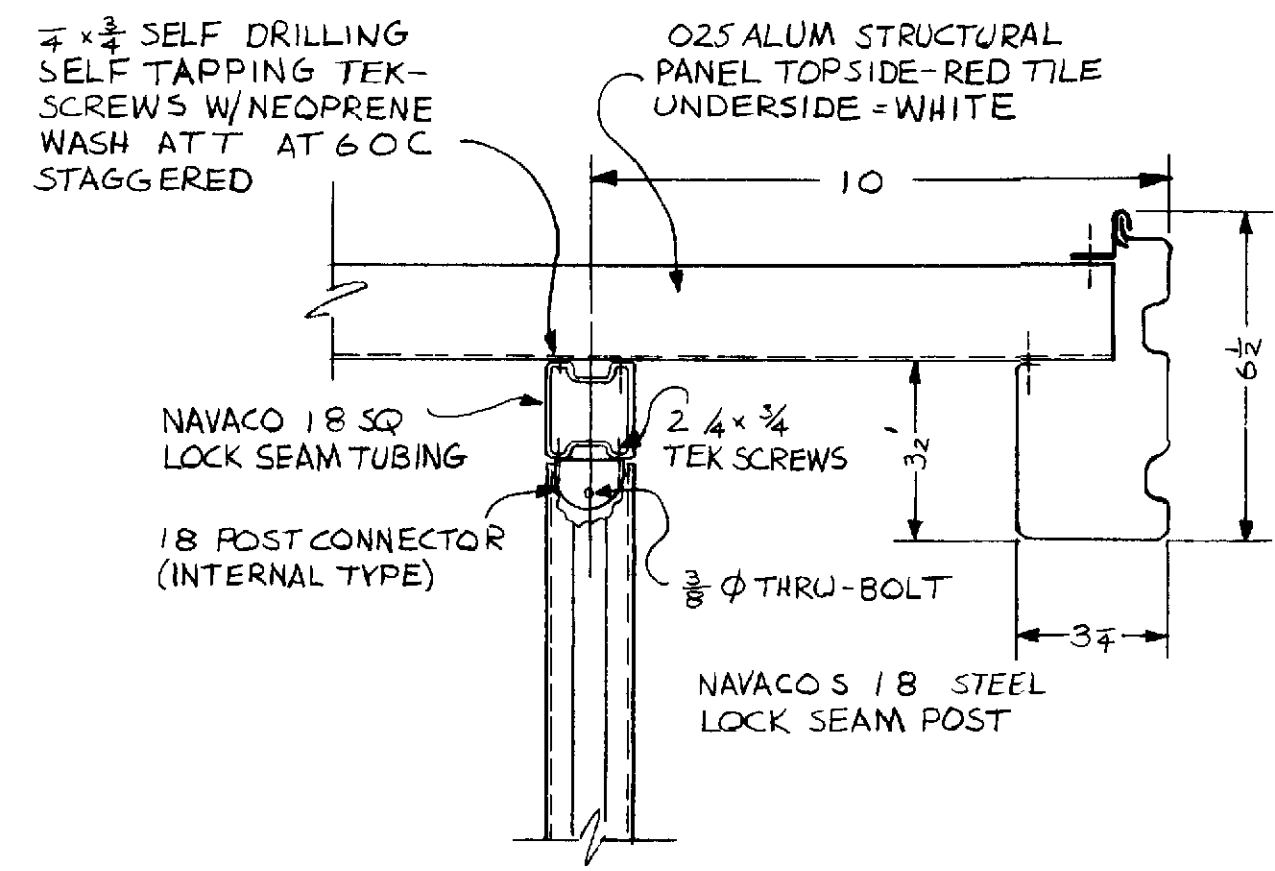


SIDE ELEVATION
SCALE 1/2" = 1'-0"



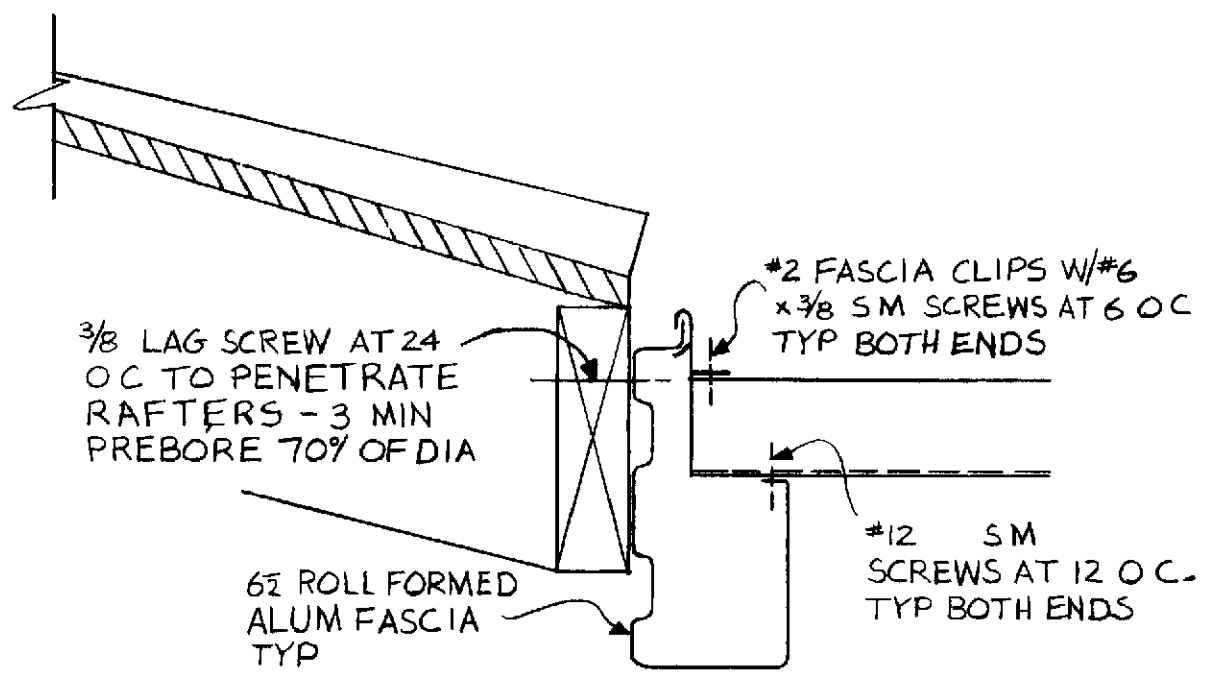
PLAN VIEW
SCALE 3/8" = 1'-0"



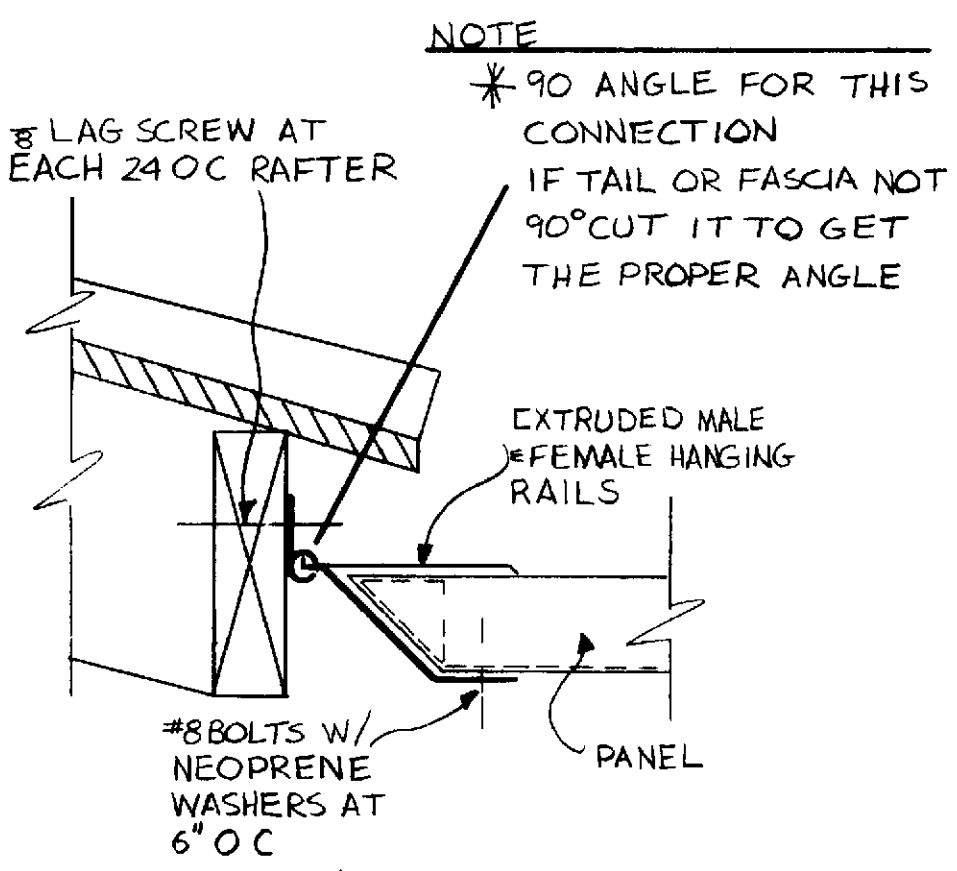
DETAIL B
SCALE 3/8" = 1'-0"

- NOTES**
- A DIMENSIONS HAVE PREFERENCE OVER SCALE
 - B CONTRACTOR SHALL SECURE AND PAY FOR ALL PERMITS REQ'D BY PCM AND THE OC BLDG DEPT
 - C CONTRACTOR TO VERIFY ALL DIMENSIONS AND CONDITIONS AT JOB SITE PRIOR TO ANY CONSTRUCTION
 - D ALL CONSTRUCTION SHALL COMPLY WITH CURRENT U.B.C. AND/OR STATE & LOCAL CODES
 - E UPON COMPLETION CONTRACTOR SHALL REMOVE ALL DEBRIS & EXCESS MATL AND LEAVE AREA BROOM-CLEAN

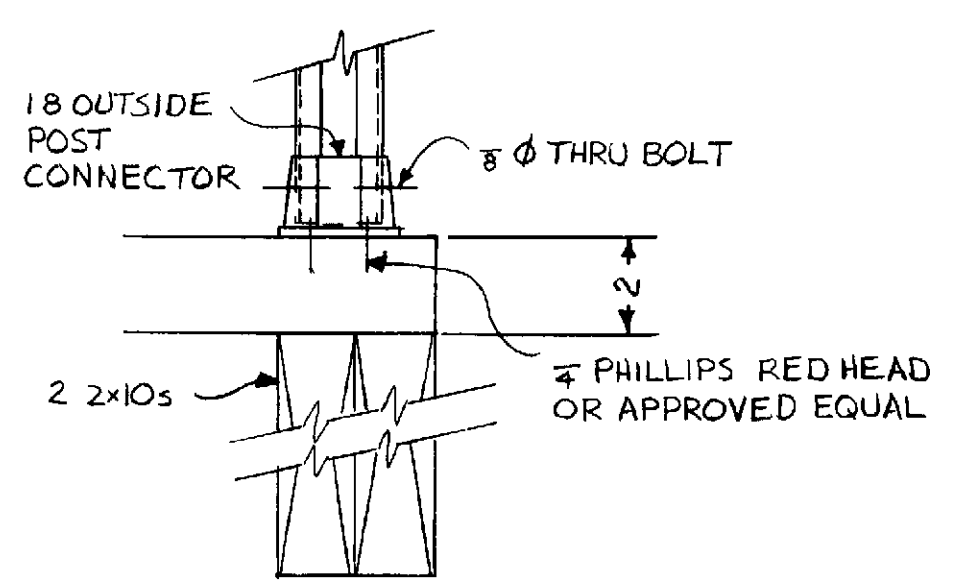
- NOTES**
- 1 PANELS SHALL BE OF NAVACO ROLL FORMED 6 STRUCTURAL TYPE OF 3003-H16 ALUM ALLOY 0.025 THK
 - 2 FASCIA SHALL BE OF LOAD BEARING GUTTER TYPE OF 3003 H16 ROLL FORMED ALLOY 0.050 THK
 - 3 POSTS SHALL BE NAVACO 1 1/2 SQ LOCK SEAM STEEL
 - 4 ALUM PANELS & FASCIA SHALL HAVE HI-BAKE ALKYD BASE ENAMEL FINISH OVER ALODINE #1200 PRIMER
 - 5 HOT DIP GALV STEEL POSTS & BEAMS SHALL HAVE A HI-BAKE ENAMEL MODIFIED VINYL BASE FINISH INSIDE & OUTSIDE OVER BONDERIZED CONVERSION COATING
 - 6 CUT AND REMOVE EXISTING GUTTER TO INSTALL PATIO COVER INSTALL NEW ENDS IN OLD GUTTER
 - 7 SEE MFR DRAWING #1770-10 FOR ENGINEERING DATA AND SPECIFIC INSTALLATION - ICBO #1470 B
 - 8 DO NOT PAINT FASCIA IT MUST BE OF BAKED ALUM OF A COLOR TO MATCH THE WOOD TRIM OF BLDG AS CLOSE AS POSSIBLE
 - 9 PROVIDE A SPLASHBLOCK OR EXTENSION AT END OF DOWNSPOUT WHERE EXIT IS IN DIRT AREA



DETAIL A
SCALE 3/8" = 1'-0"



DETAIL A ALTERNATE
SCALE 3/8" = 1'-0"



DETAIL C
SCALE 3/8" = 1'-0"

NOTE DETAILS ARE EXAMPLES ONLY CONTRACTORS SHALL FURNISH SPECIFICATIONS OF DETAILS OF CONNECTIONS PER THEIR MFR SPECS

BALCONY COVERS
 CASTILLA 21 22 8 HHOB
 CASA LINDA 22 26-6 IIO6 K#08

LEISURE WORLD
 STANDARD PLAN
 NUMBER 54

PCM INC
 DRAWN BY CHRIS MANGELS
 APPROVED BY *[Signature]*

PO BOX 2220 LAGUNA HILLS

DRAWN APRIL 1 1968
 REDRAWN MAY 15 1986
 BLS 07 1990

(68-64)