

# GENERAL NOTES

**PERMITS:** All work shall be done in accordance with the rules and regulations of the City of Orange County, California. A permit shall be obtained from the Building Department before any work is commenced.

**STANDARD PLAN:** All skylight shall be installed in accordance with the details shown on this set of drawings. Any deviation from these details shall be approved by the Building Department.

**SKYLIGHTS:** Skylights shall be installed in accordance with the details shown on this set of drawings. All skylights shall be flashed and finished in accordance with the details shown on this set of drawings.

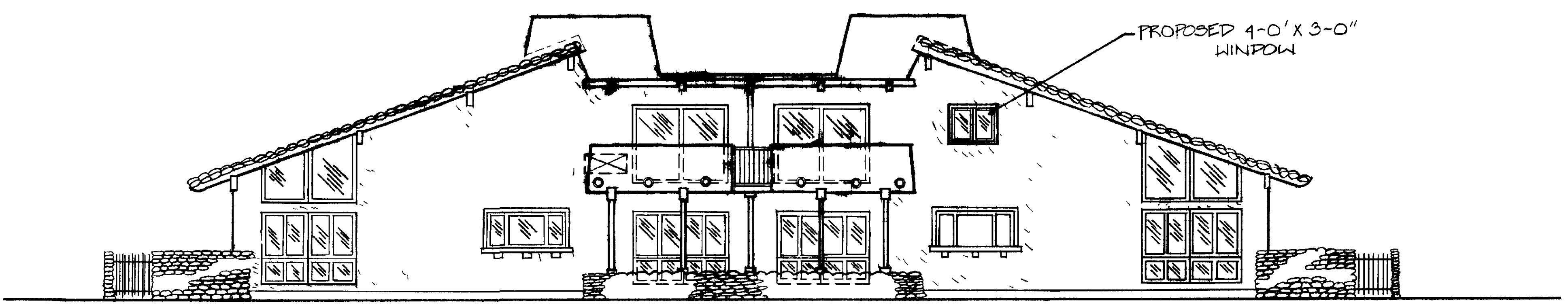
**CONSTRUCTION NOTES:** All construction shall be in accordance with the details shown on this set of drawings. All materials shall be of the highest quality and shall be installed in accordance with the manufacturer's instructions.

**TYPE OF CONSTRUCTION:** V.M.

**TYPE OF OCCUPANCY:** R-1

**WIND-UP ROOF:** Skylight shall be installed in accordance with the details shown on this set of drawings.

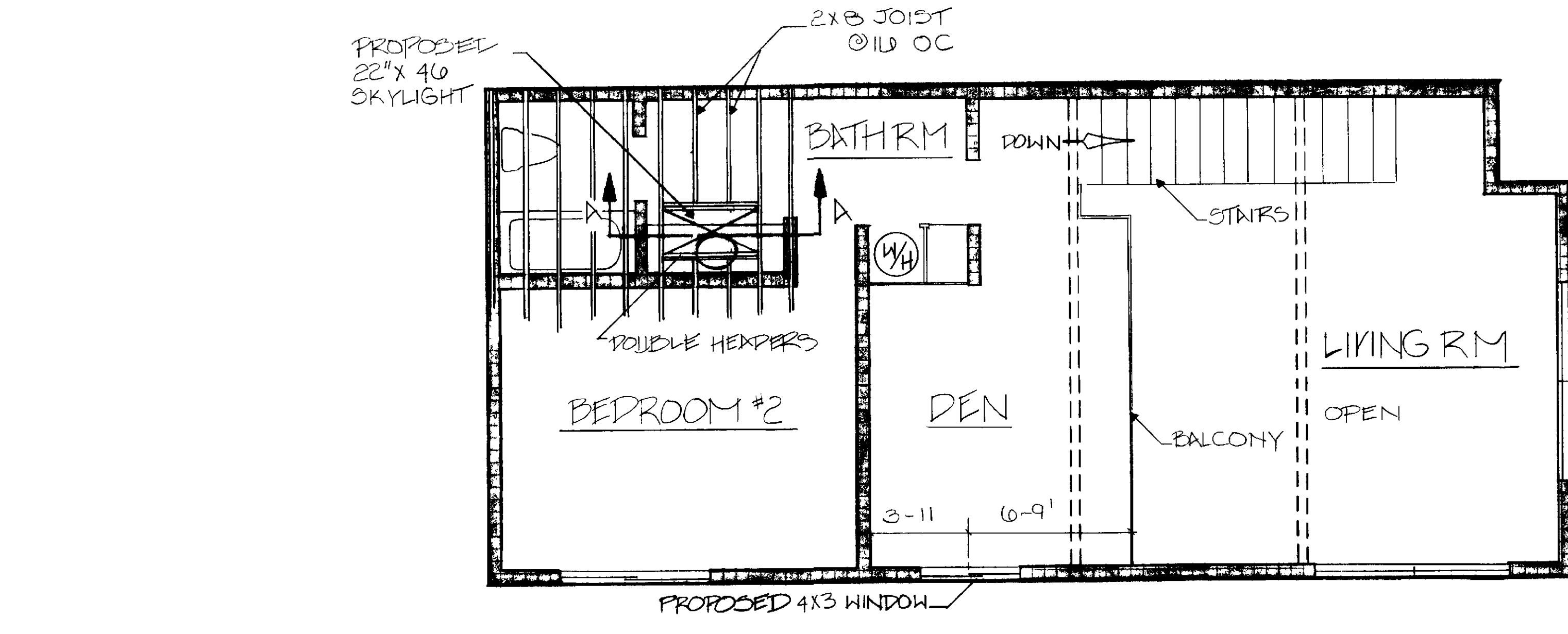
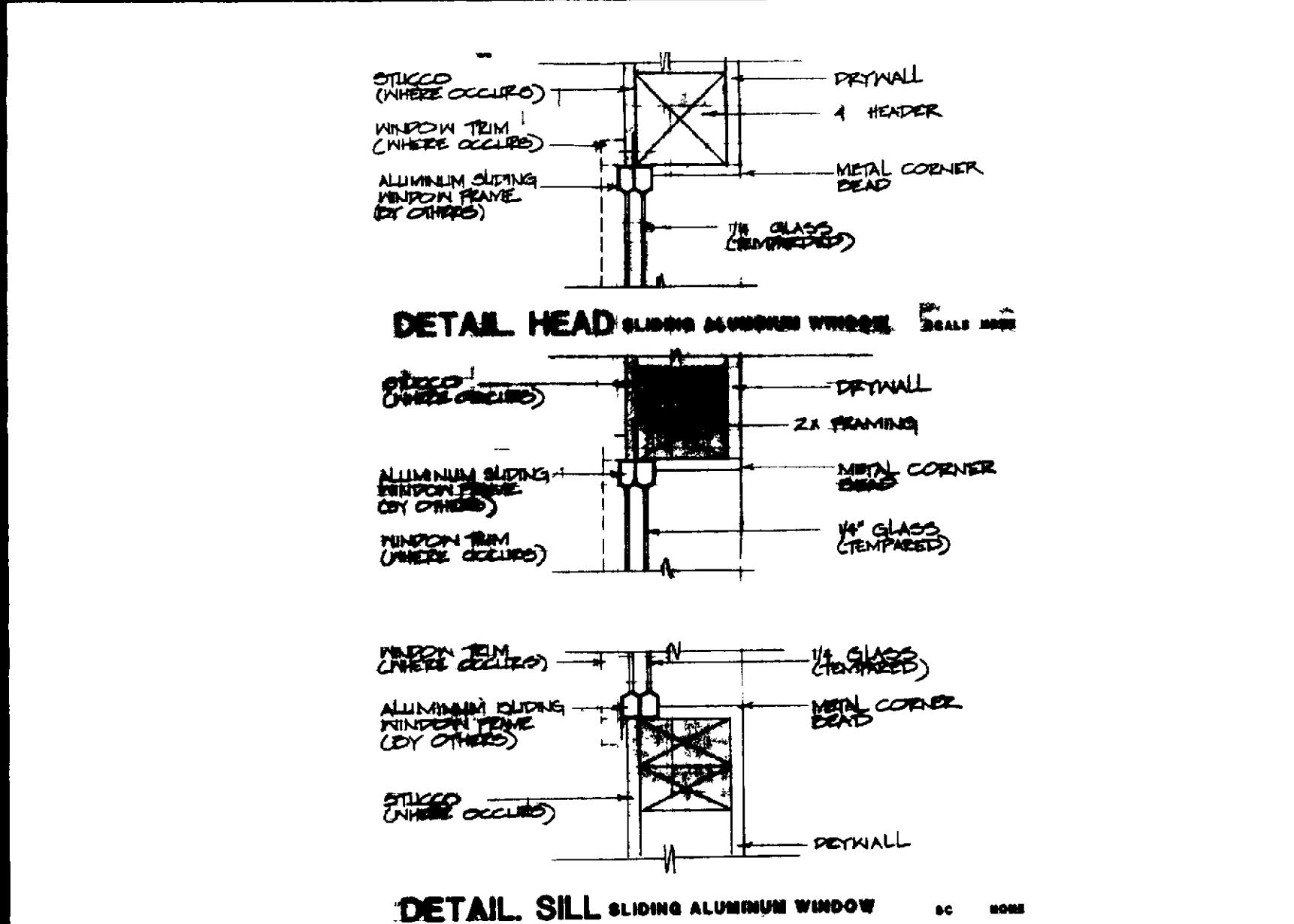
**APPLICATIONS:** Skylight shall be installed in accordance with the details shown on this set of drawings.



SCALE NONE

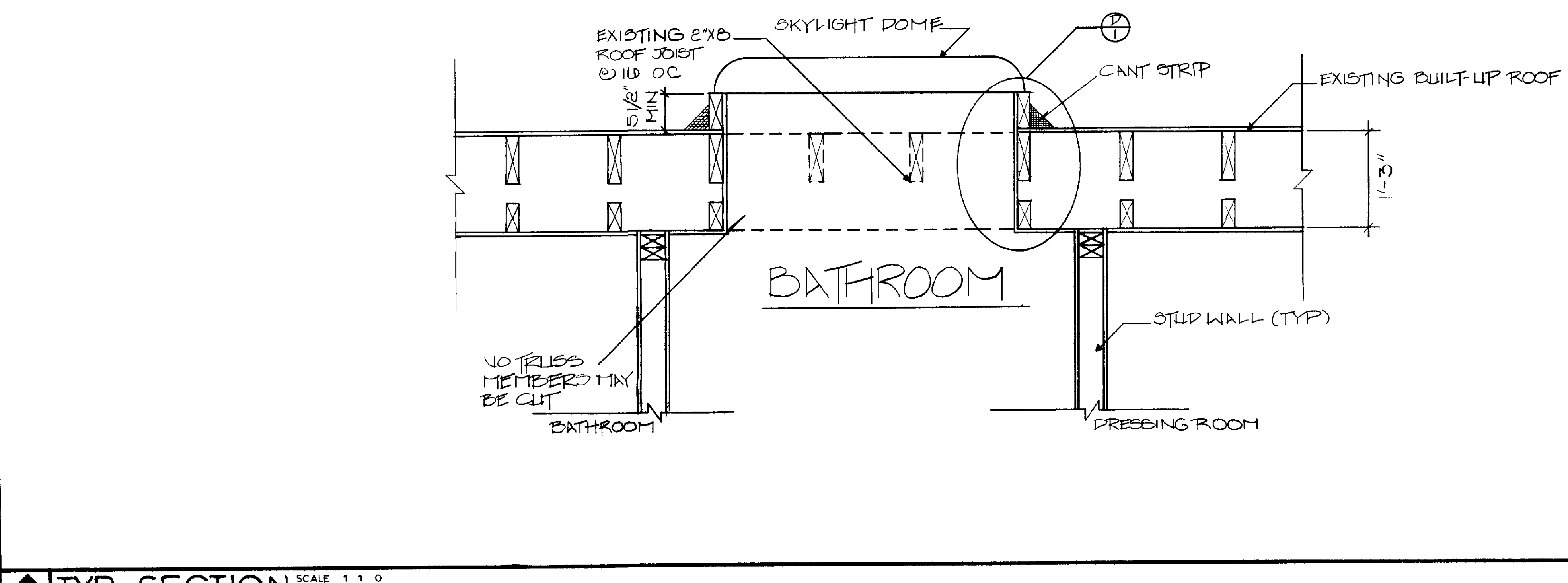
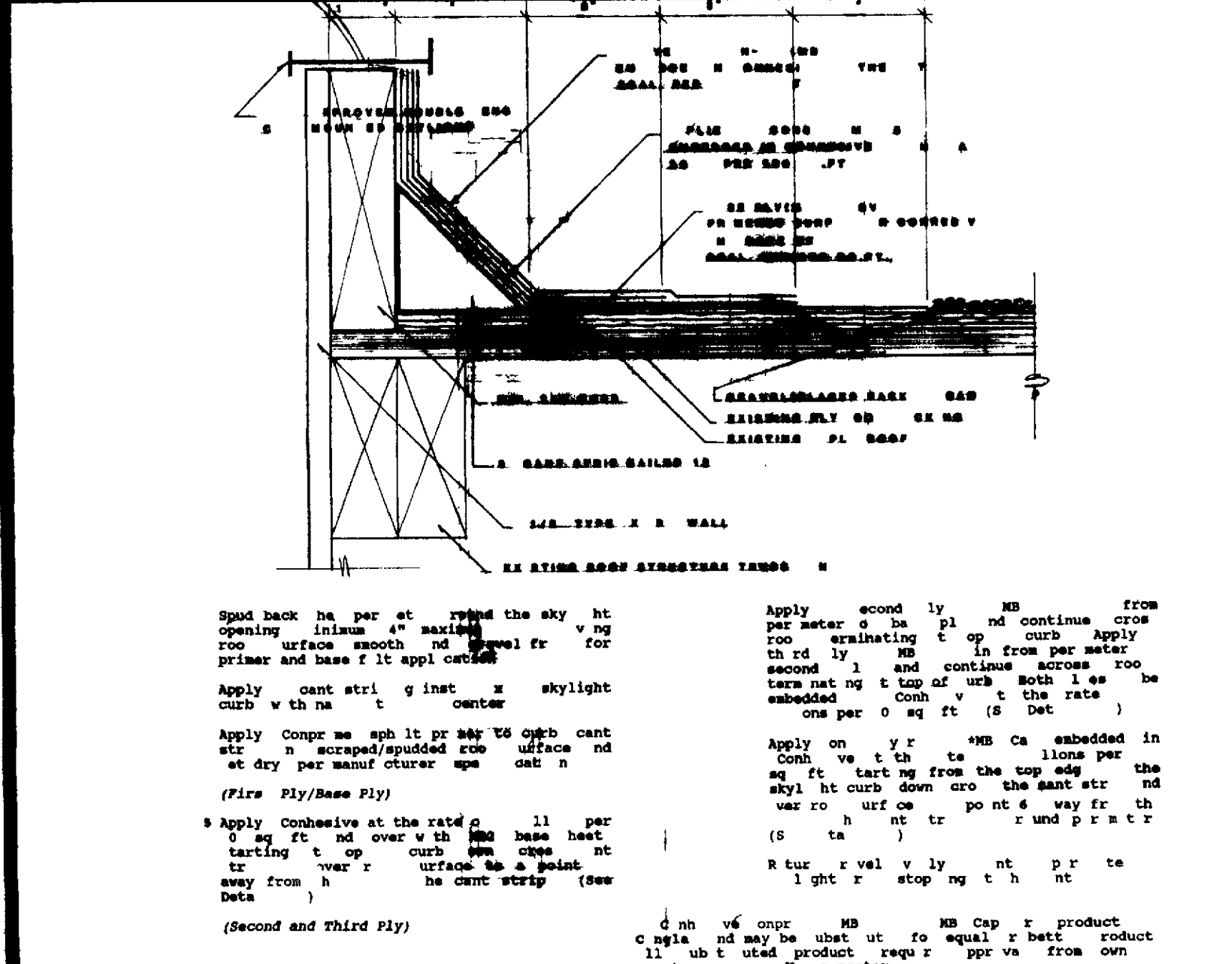
## ELEVATION

### 2 DETAIL WINDOW



## FLOOR PLAN SECOND FLOOR

### 1 DETAIL SKYLIGHT



## TYP SECTION SKYLIGHT

REVISION
4/8/92

Professional Community Management  
 LEONE WOODS - LAGU A. LLS  
 PERMITS & INSPECTIONS DEPARTMENT  
 2200 PARKWAY BLVD. LAGU A. LLS CA 92653  
 P.O. BOX 1111 LAGU A. LLS CA 92653  
 A DISTRICT OF THE CITY OF LAGU A. LLS

CONSTRUCTION PLANS FOR  
**SKYLIGHT ADDITION  
 WINDOW ADDITION**  
 JU-04

DRAWN BY  
**G. OSWALD**  
 CHECKED BY  
**E. THORP**  
 DATE  
**7/9/90**  
 SCALE  
**AS SHOWN**  
 APPROVED BY  
*Mitchell*

LEISURE WORLD  
**27**  
 STANDARD PLAN  
 SHT 1 OF 1(SHTS)