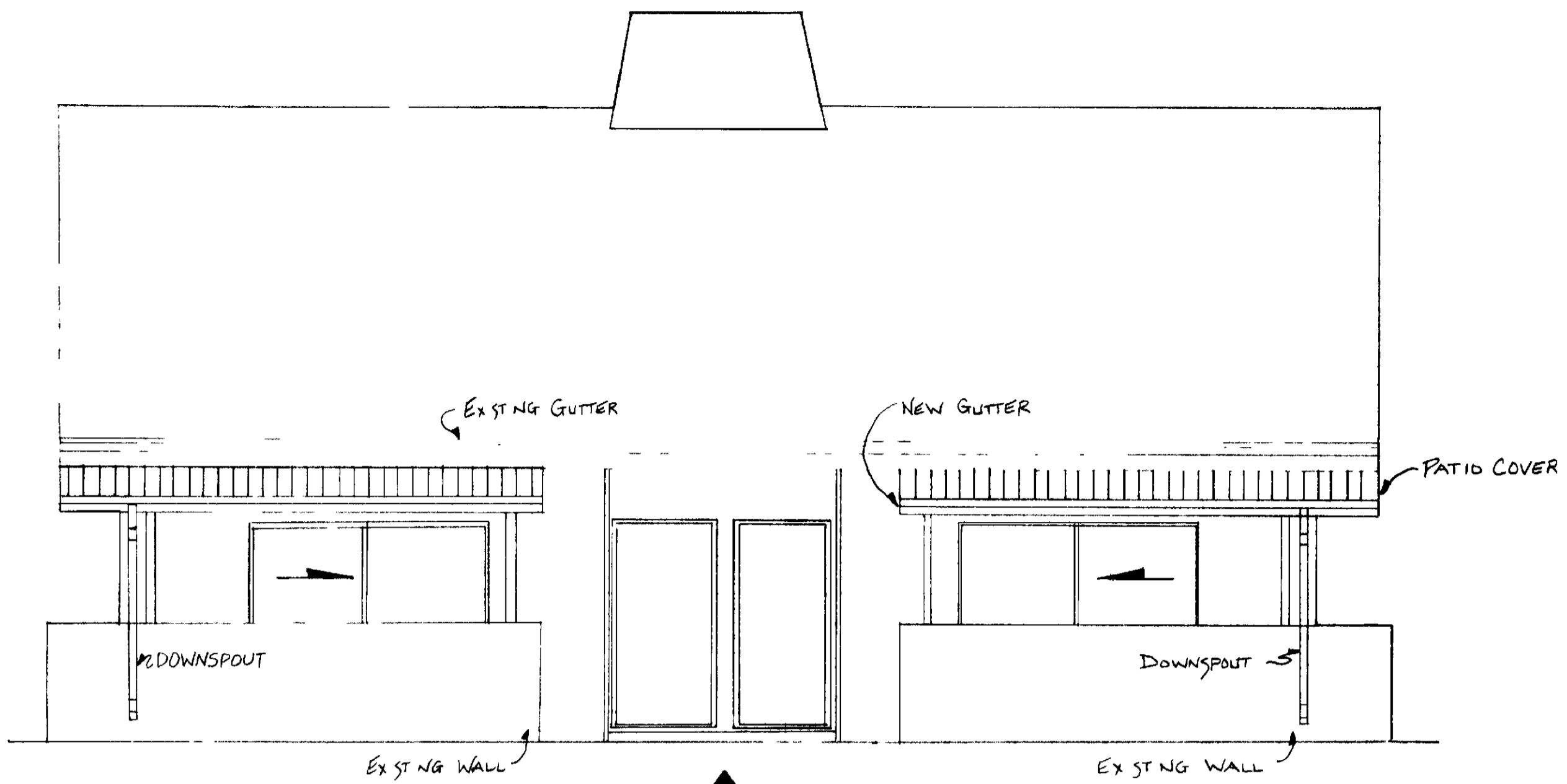
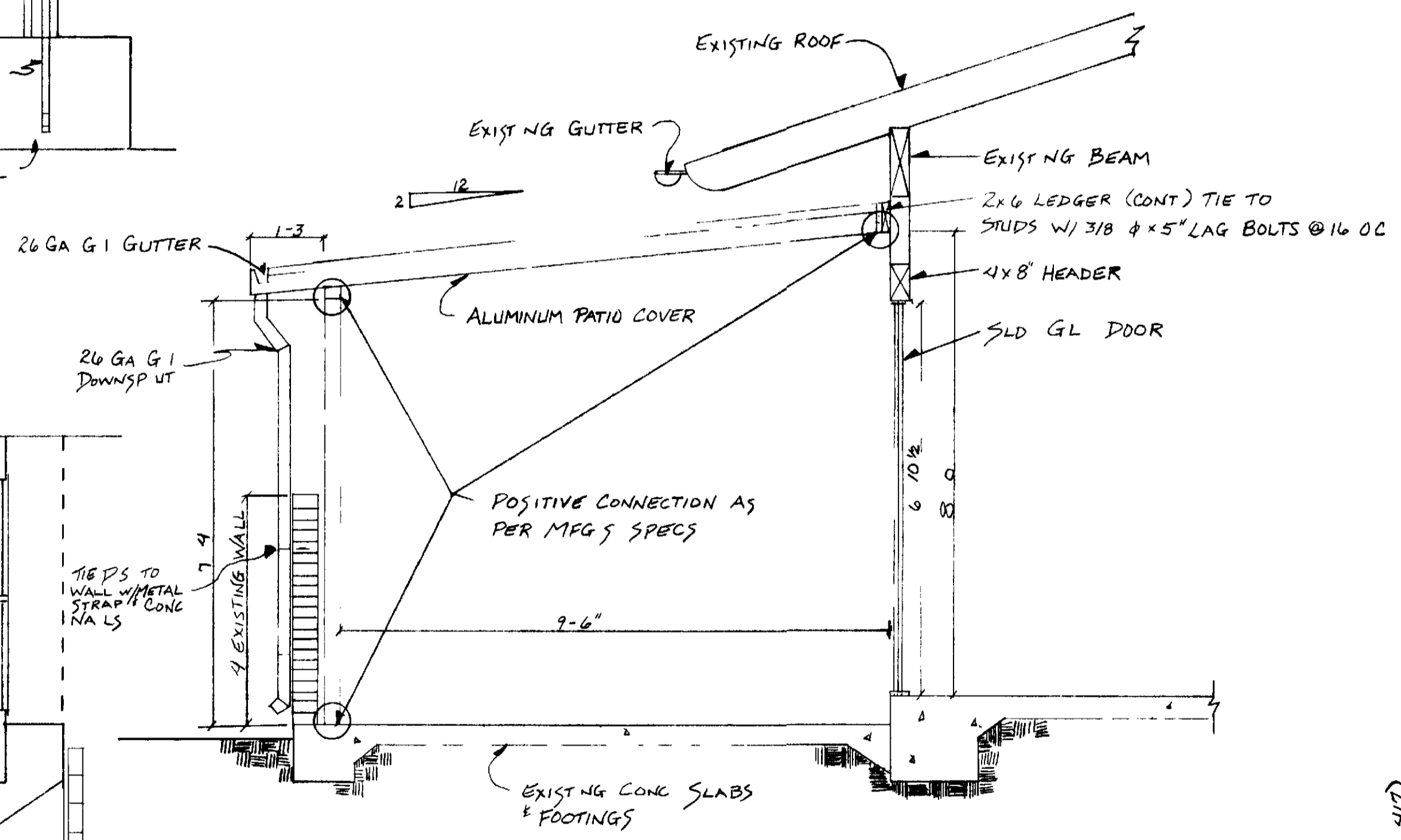


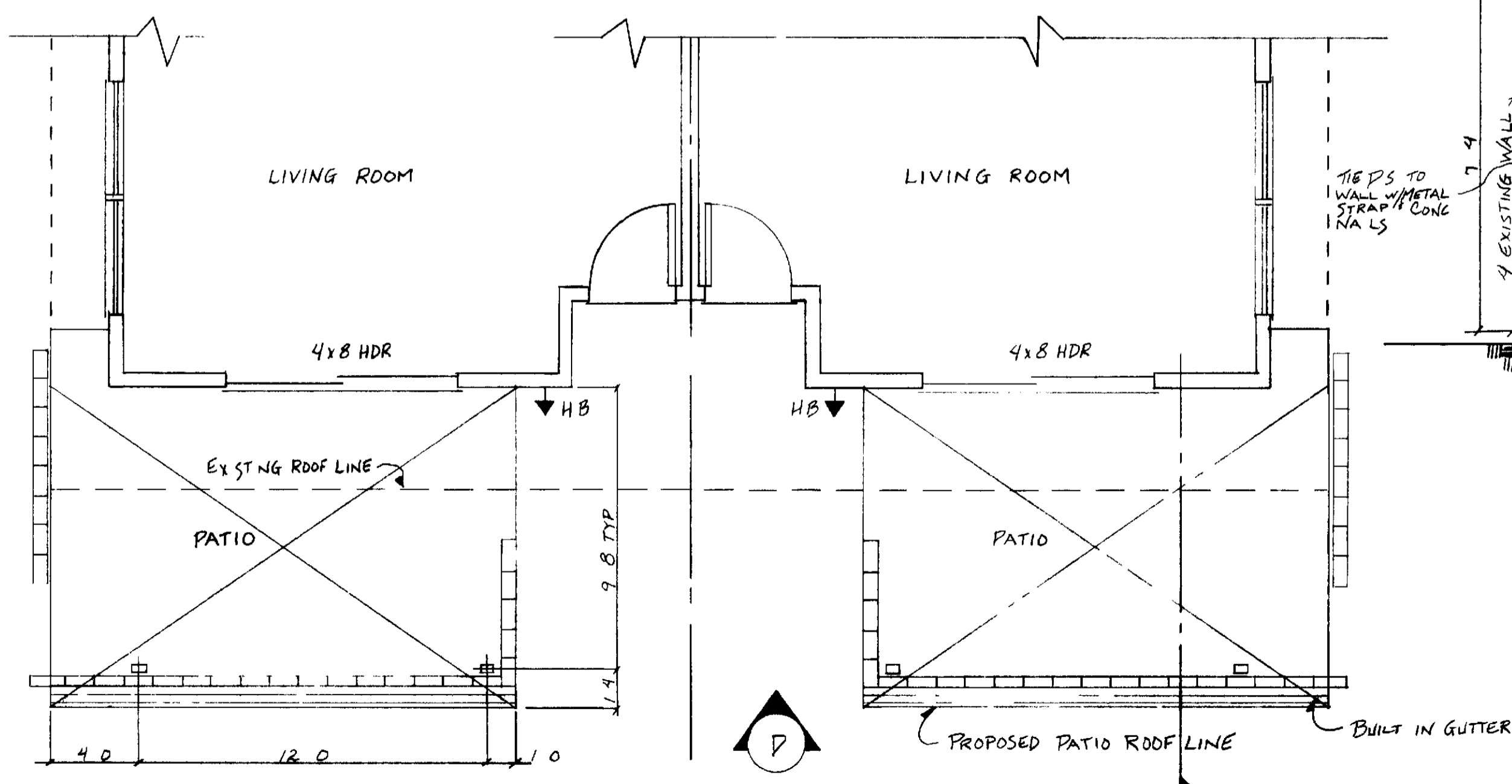
- NOTE** UNLESS OTHERWISE SPECIFIED
- 1 DIMENSIONS HAVE PRECEDENCE OVER SCALE
 - 2 CONTRACTOR SHALL VERIFY ALL DIMENSIONS & CONDITIONS @ EACH JOB SITE
 - 3 PATIO COVER CANOPY SUPPORTING MEMBERS GUTTERS & DOWNSPOUT SHALL BE ALUM W/ BAKED ENAMEL FINISH TOP & FASICA TO BE TILE RED
 - 4 ALL PHASES OF CONSTRUCTION SHALL COMPLY W/ CURRENT EDITION OF THE UBC AND/OR STATE & LOCAL CODES
 - 5 CONTRACTOR SHALL SECURE & PAY FOR ALL PERMITS REQD BY THE ORANGE COUNTY DEPT OF BLDG & SAFETY & PROFESSIONAL COMMUNITY MGT INC
 - 6 UPON COMPLETION OF WORK CONTRACTOR SHALL REMOVE ALL DEBRIS AND EXCESS MATERIALS AND LEAVE AREAS OF WORK BROOM CLEAN
 - 7 PATIO COVER MFR SHALL FURNISH BLDG OFFICIALS WITH CALCULATIONS & SHOP DRAWINGS SIGNED BY CIVIL OR STRUCTURAL ENGINEER LICENSED IN CALIFORNIA



PARTIAL FRONT ELEVATION
SCALE 1/4" = 1'-0"



SECTION D-1
SCALE 1/2" = 1'-0"



PARTIAL FLOOR PLAN
SCALE 1/4" = 1'-0"

SEVILLE 25 PLAN
ALUMINUM PATIO COVER

LEISURE WORLD
STANDARD PLAN
NUMBER 24 **24**

PROFESSIONAL COMMUNITY MGT INC
APPROVED BY *[Signature]*

PCM INC
PO BOX 2220
380-4616

SEPT 19 1973 TBW
DEC 6, 1988 CFG

(70-417)