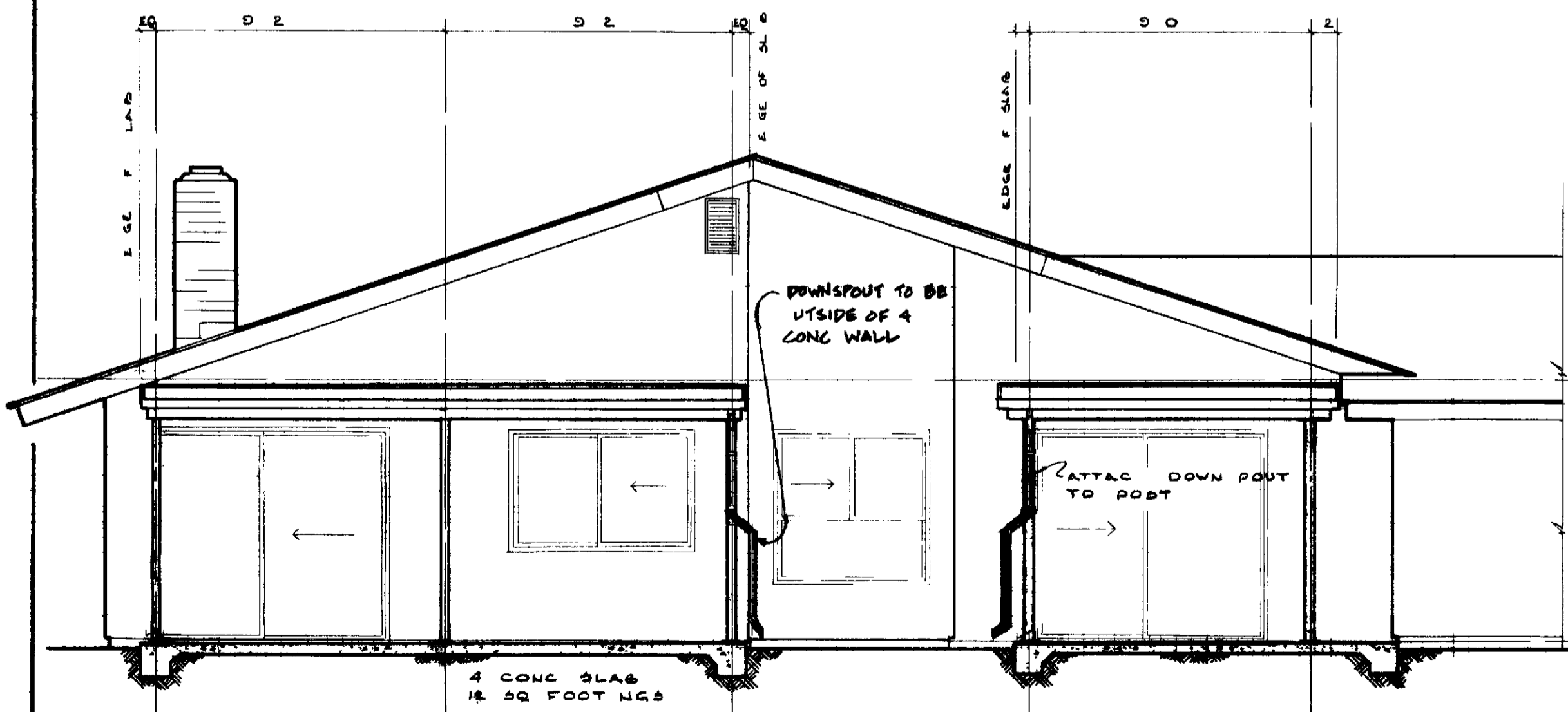


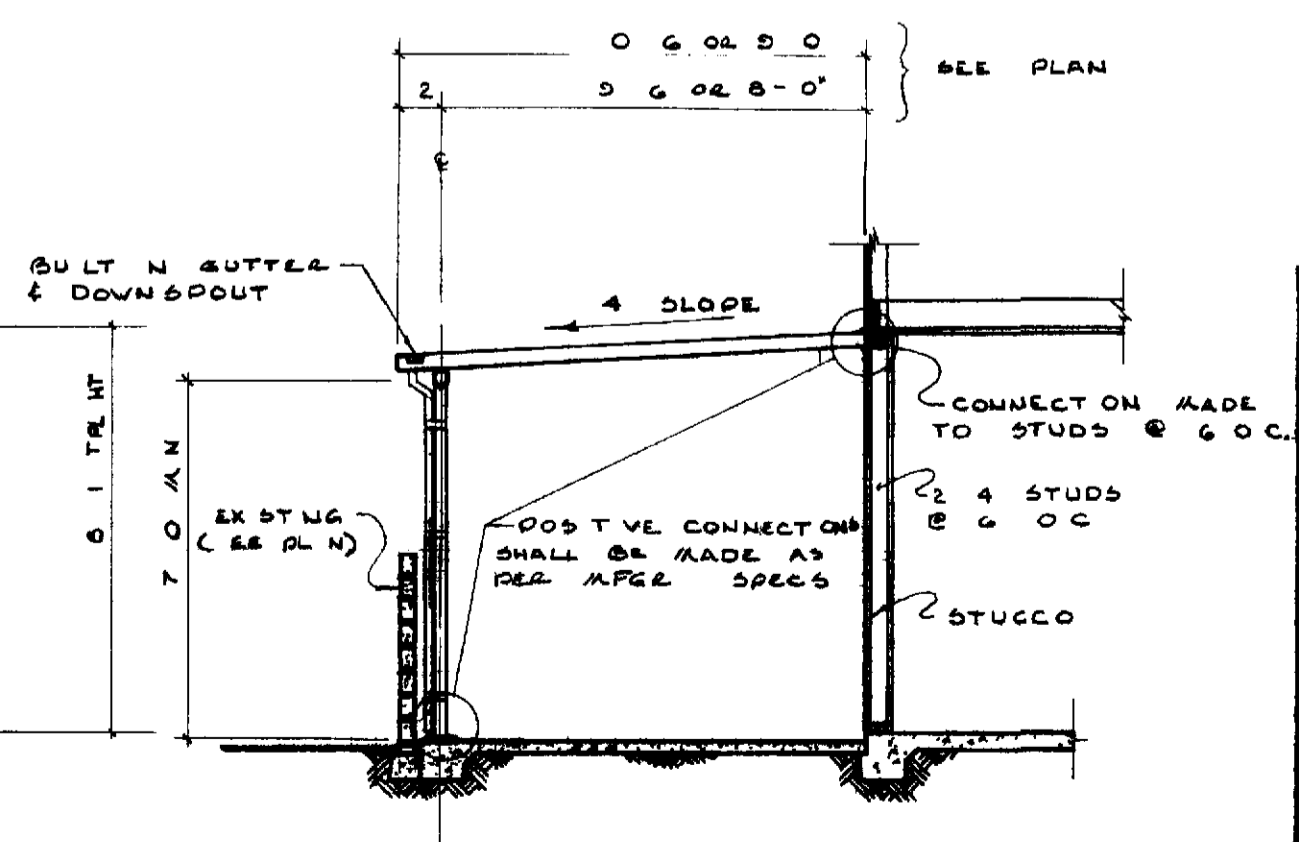
**GENERAL NOTES**

- 1 DIMENSIONS HAVE PRECEDENCE OVER SCALE
- 2 CONTRACTOR SHALL VERIFY ALL DIMENSIONS AND CONDITIONS AT EACH JOB SITE
- 3 ALL PHASES OF CONSTRUCTION SHALL COMPLY WITH CURRENT EDITION OF THE UBC AND/OR STATE AND LOCAL CODES
- 4 CONTRACTOR SHALL SECURE AND PAY FOR ALL PERMITS REQUIRED BY THE ORANGE COUNTY DEPT OF BLDG AND SAFETY & PC/M INC
- 5 UPON COMPLETION CONTRACTOR SHALL REMOVE ALL DEBRIS AND EXCESS MATERIAL AND LEAVE ALL AREAS OF WORK BROOM CLEAN
- 6 CANOPY SUPPORTING MEMBERS, GUTTER & DOWNSPOUT SHALL BE ALUMINUM BAKED ENAMEL FINISH
- 7 ALUMINUM PATIO COVER FABRICATOR SHALL FURNISH BLDG OFFICIAL WITH CALCULATIONS AND SHOP DRAWING SIGNED BY CIVIL OR STRUCTURAL ENGINEER LICENSED IN CALIFORNIA -- PRIOR TO ERECTION SUCH CALCULATIONS SHALL CONSIDER BOTH VERTICAL LOADING AND LATERAL RESISTANCE

**PARTIAL FLOOR PLAN**  
SCALE 1/4" = 1'-0"



**ELEVATION**  
SCALE 1/4" = 1'-0"



**SECTION A-A**  
SCALE 1/4" = 1'-0"

ALUMINUM PATIO COVER VILLA TERRAZA & COLUMBIA (PL C 10 & C-10R) A, B, C	
CELSURE WORLD STANDARD PLAN NUMBER 148	
PC/M INC APPROVED	<b>148</b>
PC/M INC 380-4616 POB 2220 LAGUNA HILLS	
DRWN BY DENNIS VILLIS DATE 8-6-73 1 OF 1	