

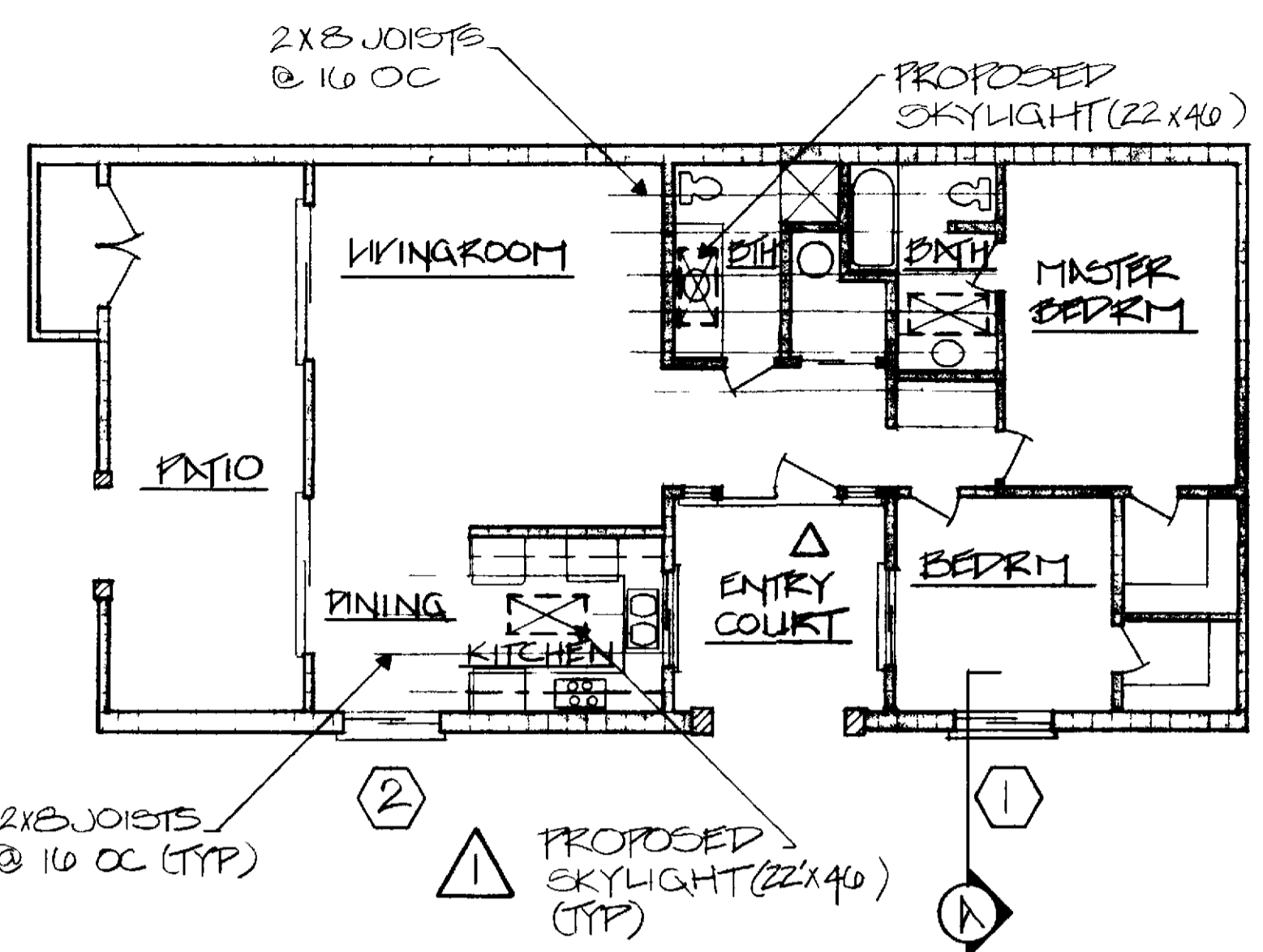
GENERAL NOTES

GENERAL REQUIREMENTS:
 PERMITS: A Mutual permit is required for skylight installation. An Orange County Building permit will be required.
 STANDARD PLAN: All skylights shall be installed per standard plan drawing in detail. All materials and workmanship shall be in accordance with the latest editions of the International Building Code and the International Residential Code. Any deviation must be approved in writing by the Building Department.
 CLEAN UP: All trades shall be responsible for the removal of their own debris and materials from the job site. The contractor shall be responsible for the removal of all debris and materials from the job site.
 CODES: All work shall comply with the current editions of the International Building Code (I.B.C.) and the International Residential Code (I.R.C.).
 CONSTRUCTION MATERIALS: All materials shall be of standard grade and better unless otherwise noted.
 MANUFACTURER'S DIRECTIONS: Where manufacturer's directions are provided, they shall be followed in addition to the drawing and specifications.
 FINISHES: Finishes shall be as indicated on the drawings.
 INTERPRETATIONS: In the event of any discrepancy between the drawing and specifications, the specifications shall prevail.
 WORK HOURS: Work shall be performed during normal business hours, Monday through Friday, 8:00 AM to 5:00 PM. Work shall not be performed on Saturdays, Sundays, or public holidays.
 PROTECTION: Existing work shall be protected during the course of the project. The contractor shall be responsible for the removal and disposal of all debris and materials from the job site.

WARRANTY: Skylight manufacturer shall warrant that the skylight is free from defects in material and workmanship for a period of one year from the date of installation. The warranty shall be void if the skylight is not installed in accordance with the manufacturer's instructions.
APPLICATIONS:
INSTALLATION: Skylight shall be mounted on a minimum 2x8 joist. Mounting shall be with galvanized steel brackets. The skylight shall be installed in a vertical position.
FINISHES: All skylights shall be finished with a white enamel finish. The finish shall be applied to the interior and exterior surfaces of the skylight frame.
COLOR: Skylights shall be finished with a white enamel finish. The finish shall be applied to the interior and exterior surfaces of the skylight frame.
UNITED L.I.M.: All skylights shall be installed in accordance with the manufacturer's instructions. The skylight shall be installed in a vertical position.
THIRD L.I.M.: Skylight shall be finished with a white enamel finish. The finish shall be applied to the interior and exterior surfaces of the skylight frame.
PATIO COVER: On skylight installation, the patio cover shall be removed.
STRUCTURE: The structural member supporting the skylight shall be a minimum 2x8 joist.
INTERIOR FINISH: The interior finish shall be a minimum 1/2" gypsum board. The finish shall be applied to the interior surface of the skylight frame.
CONSTRUCTION NOTES:
TYPE OF CONSTRUCTION: V.N.
TYPE OF OCCUPANCY: R

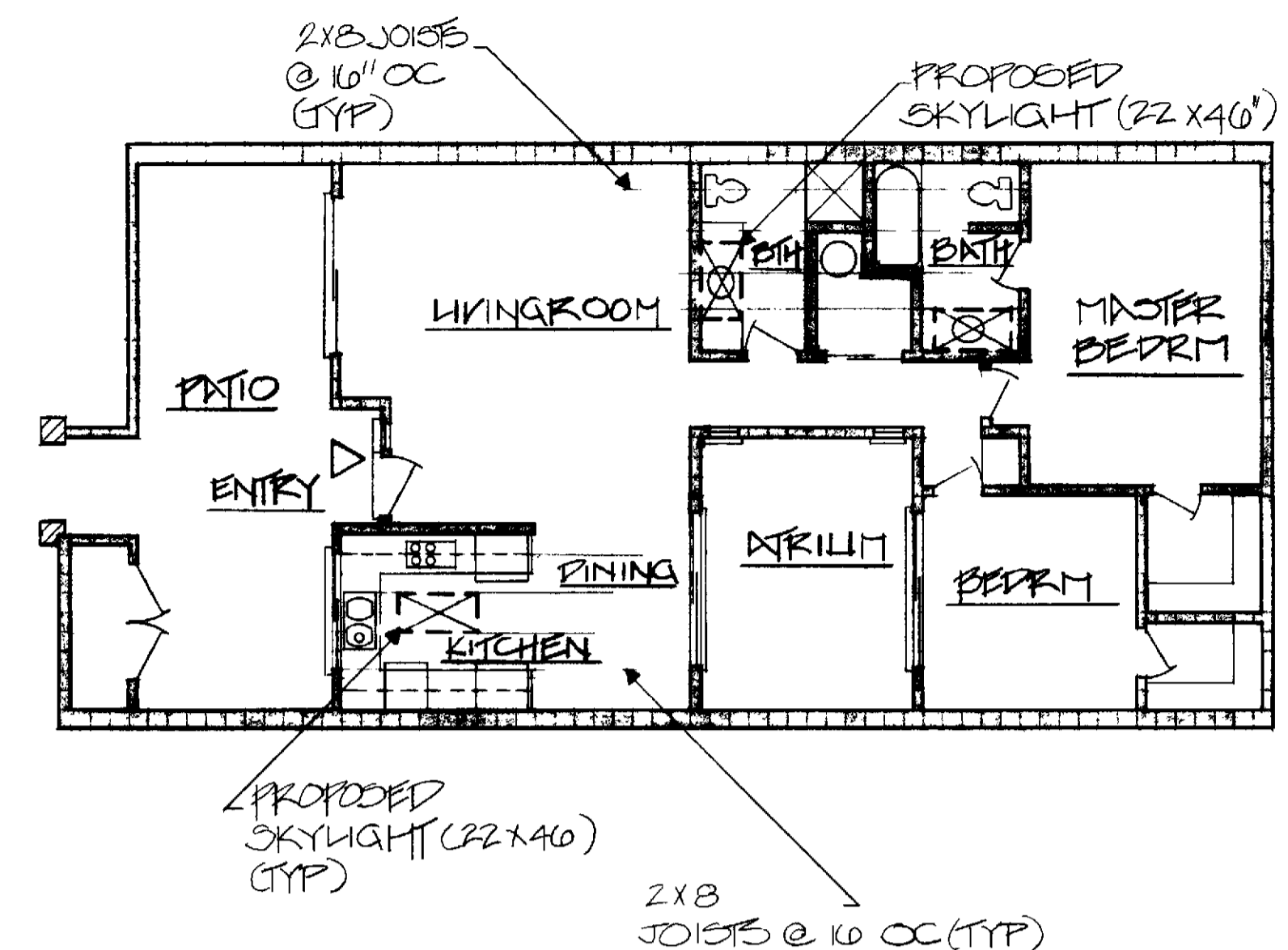
FLOOR PLAN END UNITS

SCALE NONE

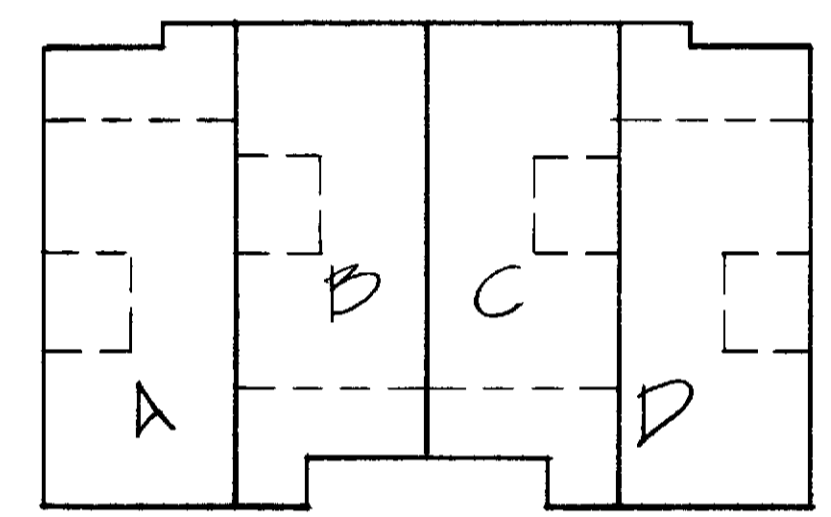


FLOOR PLAN CENTER UNITS

SCALE NONE



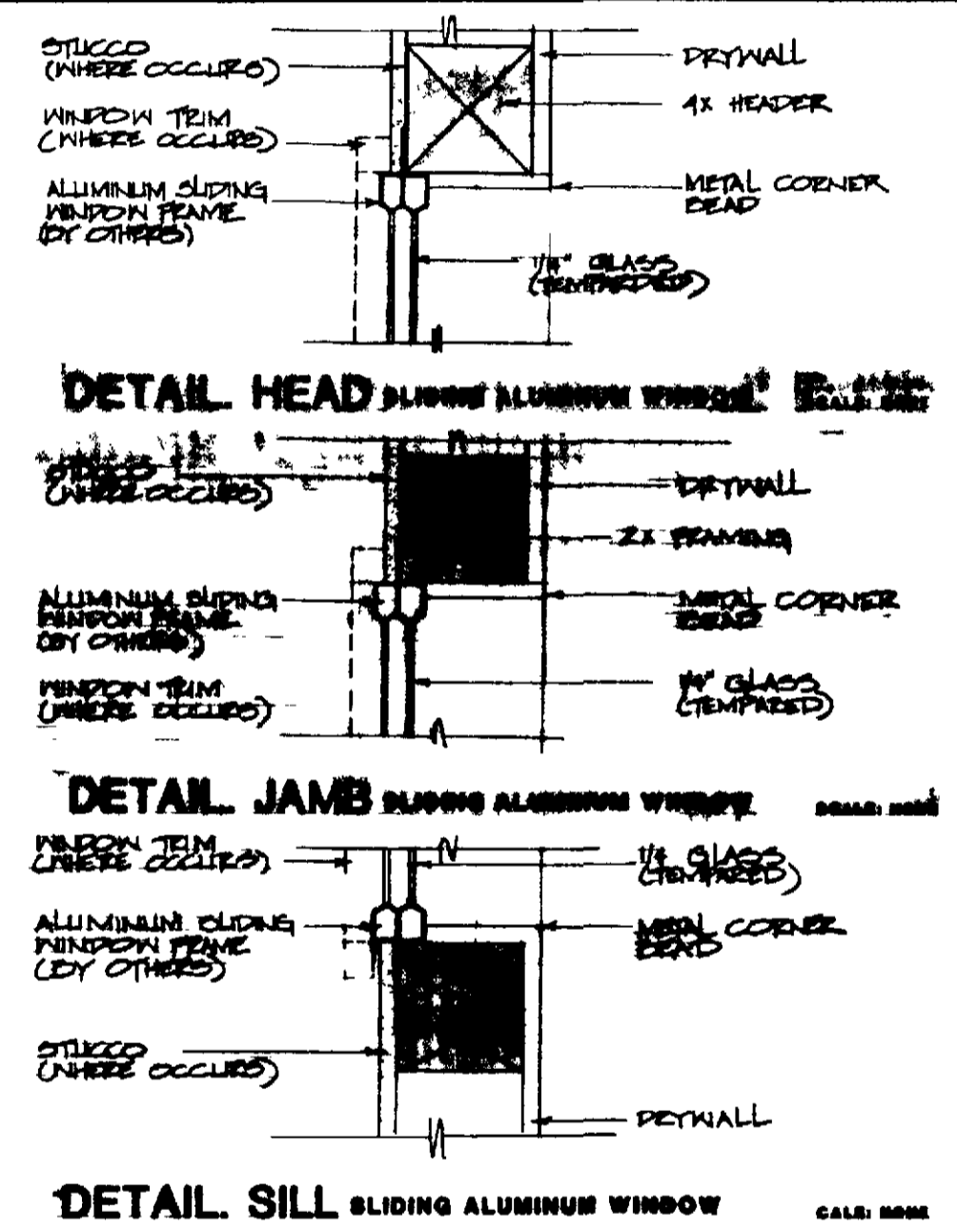
BLDG PLAN



WINDOW SCHEDULE					
SYM	WIDTH	HEIGHT	MATERIALS	TYPE	SCREEN
①	5'-0"	4'-0"	ALUMINUM	SLIDING	YES
②	5'-0"	4'-0"	ALUMINUM	SLIDING	YES
③					

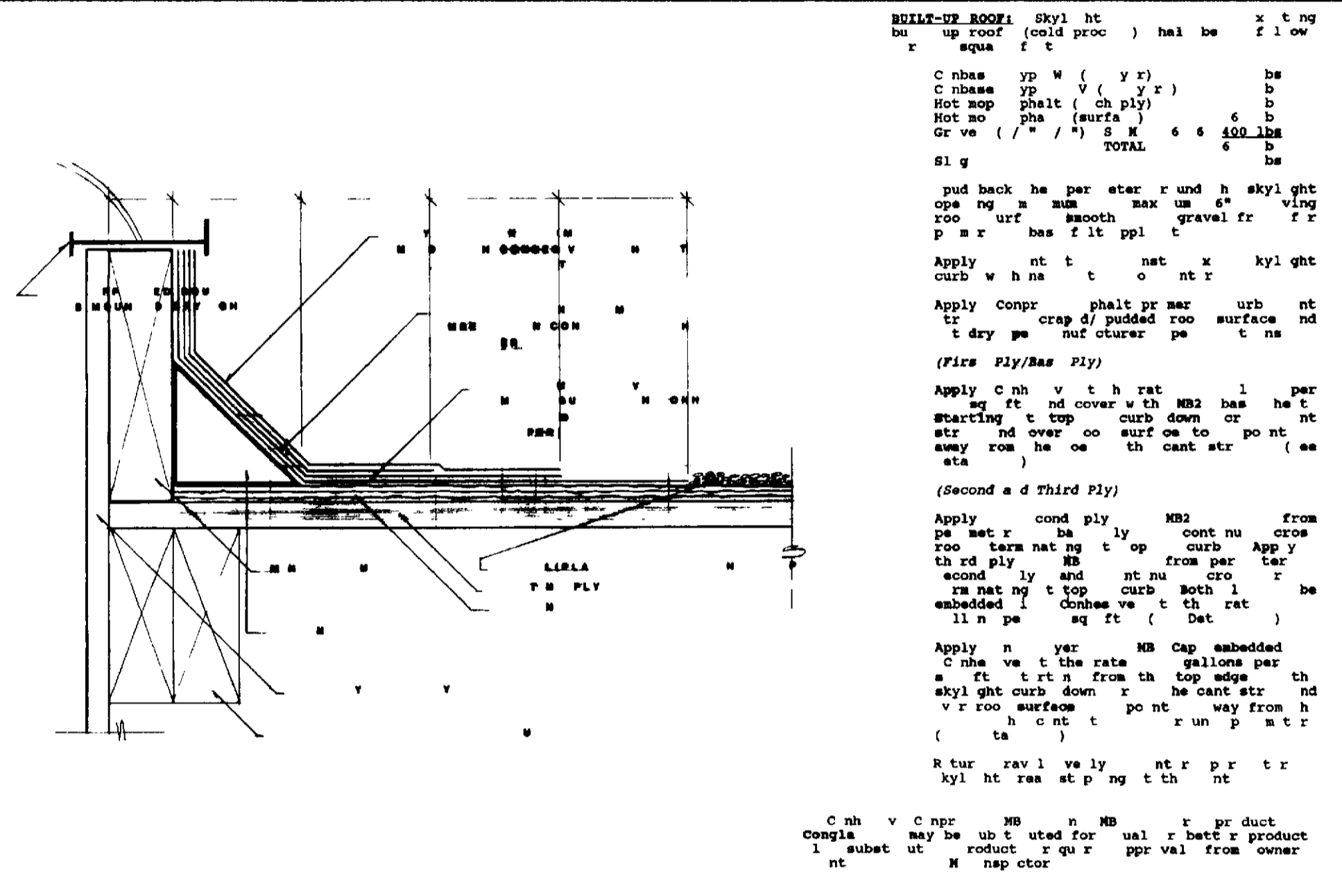
① DETAIL WINDOW

SCALE 1/2" = 1'-0"



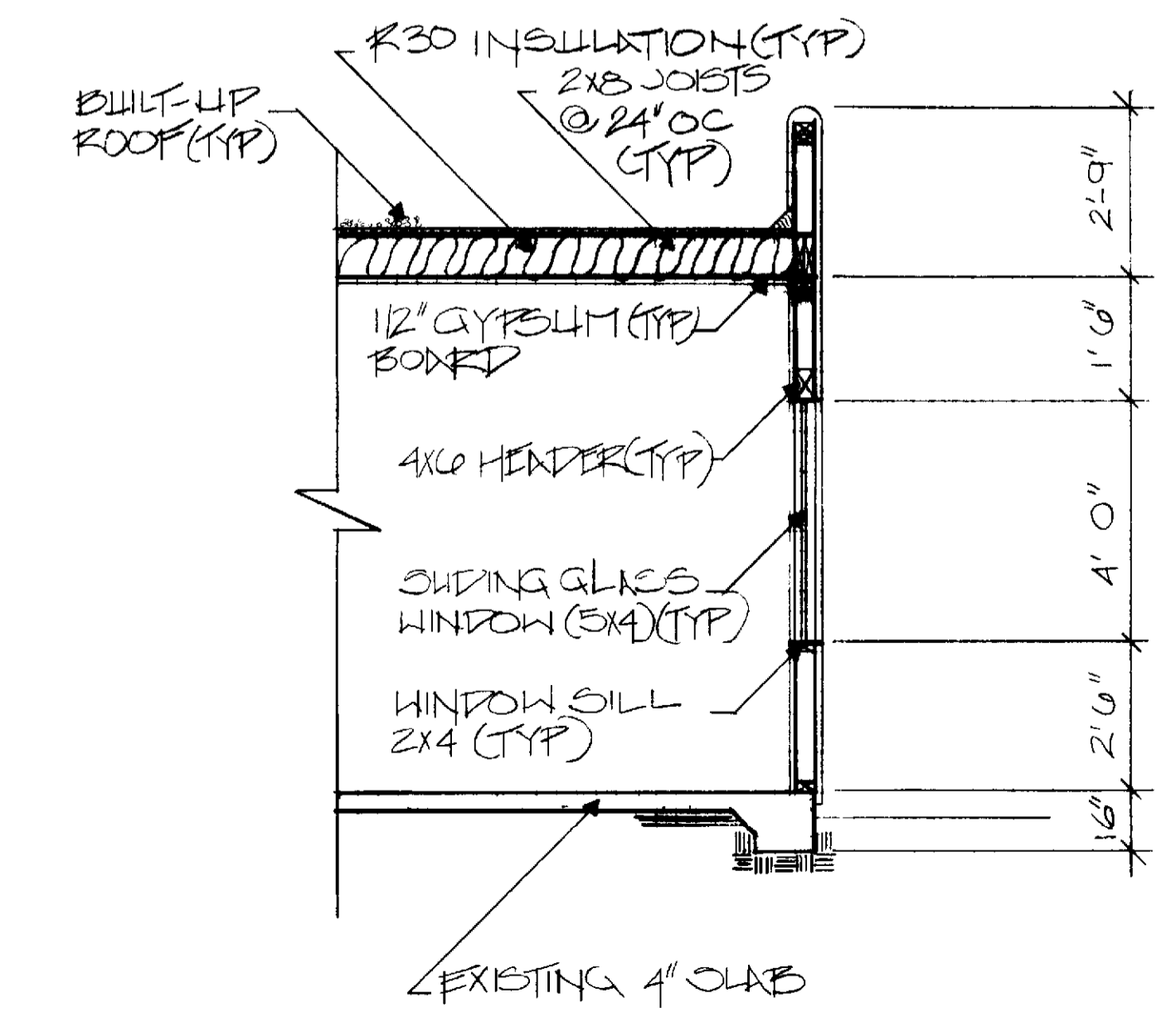
④ DETAIL SKYLIGHT

SCALE 1/2" = 1'-0"



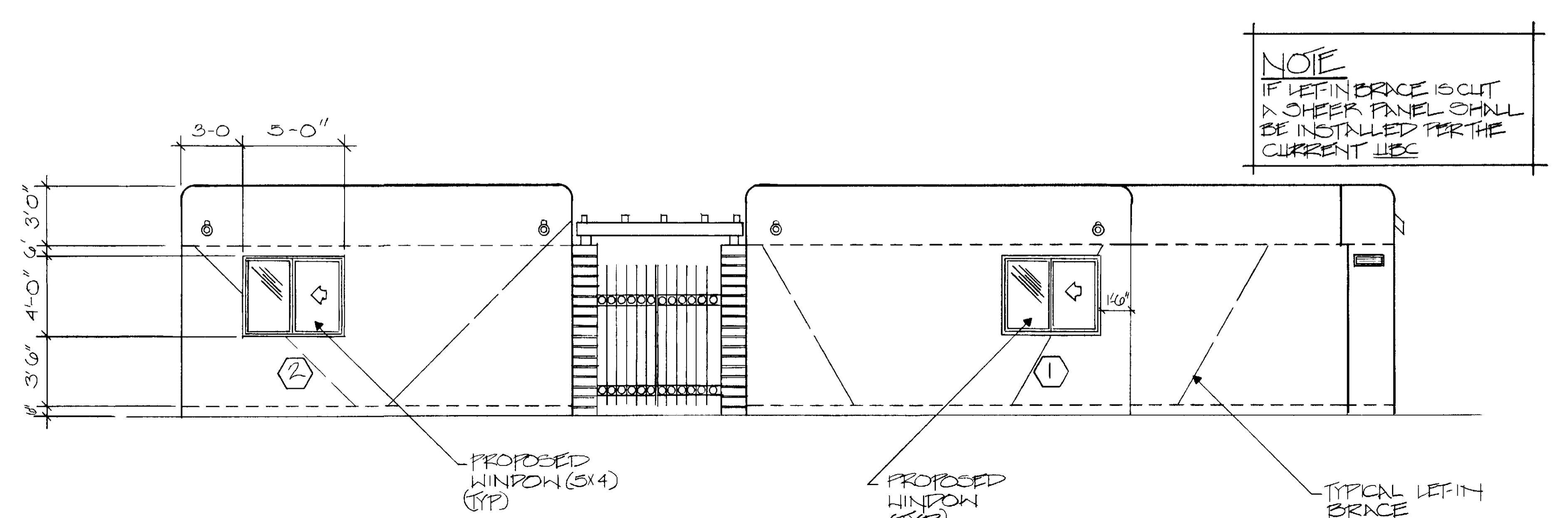
① TYP SECTION

SCALE 3/8" = 1'-0"



△ ELEVATION

SCALE 1/4" = 1'-0"



NOTE: IF LEFT-HAND BRACE IS CUT A SHEER PANEL SHALL BE INSTALLED FOR THE CURRENT USE.

REVISION
4/2/92

Professional Community Management
 LE SURE, R.L. - L.A.C. No. 115
 PERMITS & INSPECTIONS DEPARTMENT
 244 W. ALTON PARKWAY, SUITE 1100, ANAHEIM, CA 92805
 P. 714.771.1111 FAX 714.771.1112

CONSTRUCTION PLANS FOR
 SKYLIGHT ADDITION
 WINDOW ADDITION
 AB-04

DRAWN BY G. OSWALD
 DATE 8/10/90
 SCALE AS SHOWN
 APPROVED BY

LEISURE WORLD
 10
 STANDARD PLAN
 SHEET 1 OF 1 SHEET